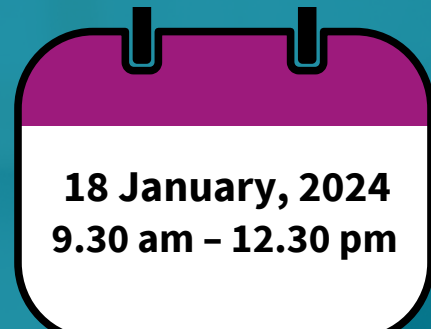


The Church of England Foundation for Educational Leadership, in collaboration with the Institute for Educational and Social Equity presents:

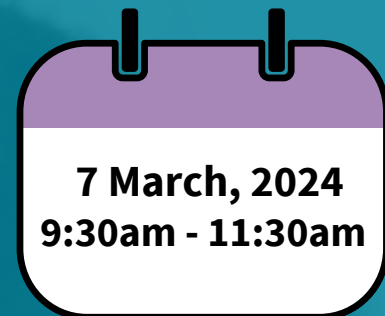
Inclusive Curriculum Leadership course

Spring, 2024 Cohort.

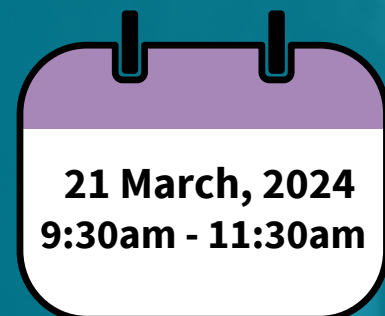
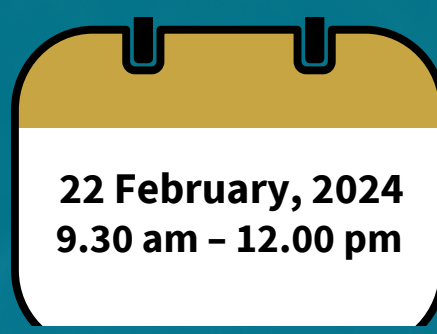
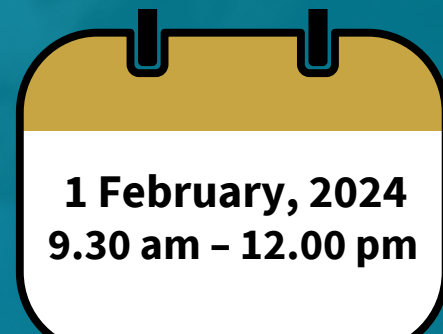
Cultural Competence



Anti-racist Pedagogy

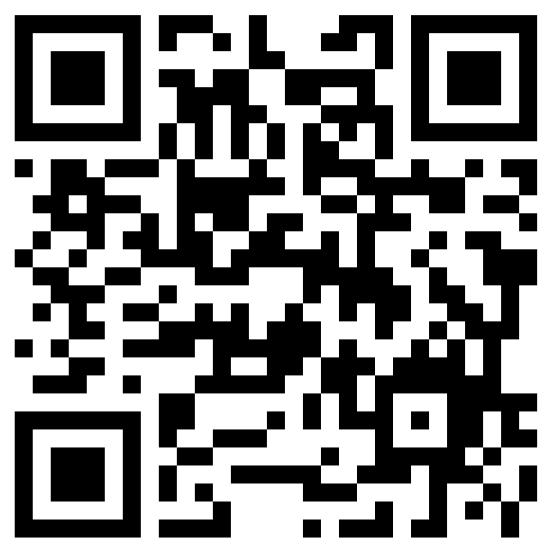


Diversifying, Decolonising & Inlusivising the curriculum



Suitable for diocesan education teams, MAT leads, headteachers, subject and phase leads, chaplains, bishops and anyone with a passion for inclusive education.

Spring, 2024 Cohort.



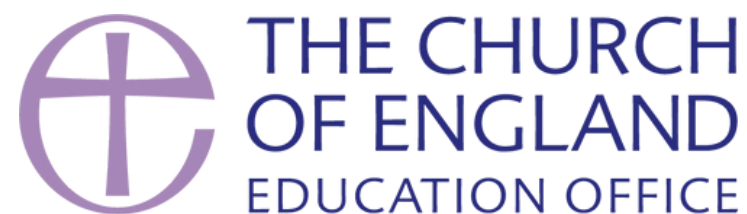
Fees: Associate level £795 + VAT

We will offer a buy-one-get-one-free to the first five people who register for the program.

Visit our website: www.cefel.org.uk/ICF/.

REGISTER

Scan the QR code or click [this form](#).



FOUNDATION FOR
EDUCATIONAL
LEADERSHIP



 [@EOlulari](https://twitter.com/EOlulari)

 Elizabeth.Olulari@churchofengland.org

 www.cefel.org.uk/leaderslikeus/

 [Elizabeth Olulari](https://www.linkedin.com/in/ElizabethOlulari)

The Church of England Foundation for Educational Leadership, in collaboration with the Institute for Educational and Social Equity presents:

Inclusive Curriculum Leadership course

Calling on all leaders to connect and commit to joining this innovative programme as part of a Church of England cohort.

This program will equip and upskill your knowledge and expertise in anti-racist pedagogy, cultural competence and the Inclusive Curriculum Framework and its application.

This will enable you to review your curriculum content and resources and ensure all future content and resources are inclusive and representative of our diverse world.

To find out more, please visit our [webpage](http://www.cefel.org.uk/ICF/), www.cefel.org.uk/ICF/

To register, please complete this [form](#).

Spring, 2024 Cohort.



 [@EOlulari](https://twitter.com/EOlulari)

 Elizabeth.Olulari@churchofengland.org

 www.cefel.org.uk/leaderslikeus/

 [Elizabeth Olulari](https://www.linkedin.com/in/ElizabethOlulari)

 THE CHURCH OF ENGLAND
EDUCATION OFFICE

INSTITUTE FOR
EDUCATIONAL
LEADERSHIP