

# National Secondary Leaders Network

---

**Network for Church of England Schools**

September 2022 – July 2024



THE CHURCH  
OF ENGLAND  
EDUCATION OFFICE

FOUNDATION FOR  
EDUCATIONAL  
LEADERSHIP



## WHY DO WE WANT TO SEE SECONDARY SCHOOL LEADERS FLOURISH?

At the Church of England Foundation for Educational Leadership (CEFEL), we believe that ‘leaders in education are called to deepen understanding and wisdom, extend knowledge and develop professionally’.<sup>1</sup> Indeed, this very network was set up for that purpose. Over the last two years, the impact of historic events has highlighted the power of Secondary School leaders working together to support one another other— bringing into focus the critical need for Secondary school leaders to be informed about the policies, curriculum, social justice, wellbeing that impact upon students’ learning and flourishing. The challenges of COVID19 have heavily impacted upon how Secondary School leaders lead their schools. We have a vision to support schools in:

- demonstrating **WISDOM** by upskilling staff with the evidence-informed knowledge to support these students as best they can (and signposting further in-depth training)
- building **COMMUNITIES** that collaborate to ensure flourishing for all – particularly the most vulnerable – through networking school leaders together
- seeing the innate **DIGNITY** in each and every student, thus seeking to understand them as best we can and prioritising their needs within our schools
- becoming beacons of **HOPE** so that ‘bad experiences need not have the last word’<sup>2</sup>

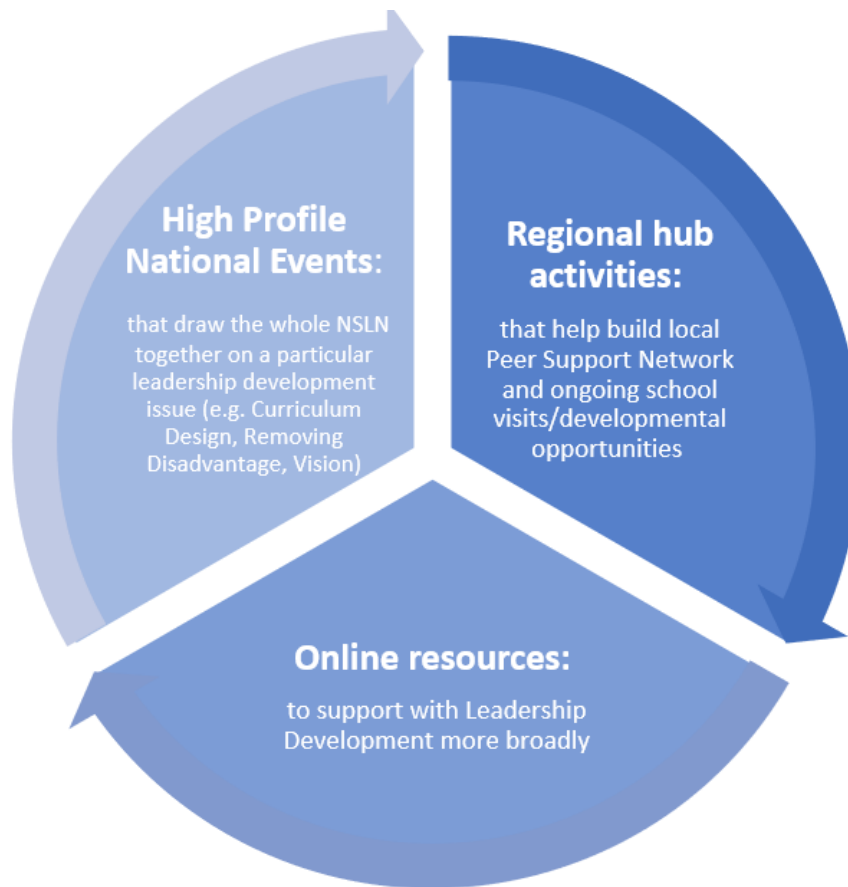
<sup>1</sup> David Ford & Andy Wolfe *Called, Connected, Committed* (2020)

<sup>2</sup> Church of England Vision for Education *Deeply Christian, Serving the Common Good* (2016)

## WHAT WILL THE NETWORK INVOLVE?

Drawing on expertise (both from academics and practitioners) and CEFEL's track record of leadership development across its 4,700 schools over the last five years, we are again offering this network to partners across the country. It is aimed at Secondary School headteachers and senior leaders, with various topics aimed at different departments within the school. We run this network nationally and regionally to meet specific regional needs.

The NSLN provides opportunities to participate in:



As part of the NSLN, all schools may access every aspect of this programme, with up to 2 delegates for each national and regional event. Registration for each event will happen separately, and schools may send a different pair of representatives to each event as deemed appropriate. For the National Conference 2023, NSLN schools will be offered one free ticket. All schools will be allocated to a regional hub for these network meetings, which will be done geographically. Specific dates and times for these meetings will be arranged through the regional hub school and will rotate around schools in the regional group. The focus of these development sessions will be planned according to local needs. Learn more by visiting the website.



## WHAT WILL THE NETWORK INVOLVE?

### Year 1

<p><b>Summer 2 2022</b></p> <p><b>Tuesday 5<sup>th</sup> July 2022</b></p>	<p><b>National</b></p>	<p><b>Launch Event</b> Unpack the White Papers with <b>Andrew Warren</b>, <i>Regional Schools Commissioner for the West Midlands</i>, while looking at strategies for implementation. Input from <b>Ian Bauckham</b>, <i>CBE, Chair of Ofqual</i>, on the future of assessment and curriculum for KS4 and KS5, <b>Prof. Paul Miller</b>, exploring Equity, Diversity, and Inclusion within schools. <b>Kathryn Morgan/Thora Eberts</b>, Teaching School Hubs Council – developing a whole-school/MAT career pathway.</p>	<p><b>CEOs, Headteachers/SLT</b></p>
<p><b>Autumn 1 2022</b></p>	<p><b>Regional</b></p>	<p><b>A chance to meet both Nigel Genders, Chief Education Officer of the Church of England Foundation for Educational Leadership Development and Andy Wolfe, Education Officer of the Church of England Foundation for Educational Leadership Development– To look at the implication of the White Paper Regional Academisation to form a collective regional strategy.</b> <b>Racial Justice -Explore the implication of our commitment to Equity, Diversity, and Inclusion.</b></p>	<p><b>Headteachers/SLT</b></p>
<p><b>Autumn 2 2022</b></p> <p><b>Tuesday 8<sup>th</sup> November 2022</b></p>	<p><b>National</b></p>	<p><b>National NSLN Conference Inclusion</b> A hope-filled and practical approach to the differential legacy of the pandemic on our most vulnerable students. This will include workshops on:</p> <ul style="list-style-type: none"> <li>• <i>Trauma-informed approaches</i></li> <li>• <i>Preventing Peer on peer abuse and updating safeguarding</i></li> <li>• <i>SEND</i></li> <li>• <i>mental health and well-being</i></li> <li>• <i>Re-establishing positive attendance</i></li> </ul> <p>Input from: TBC</p>	<p><b>CEOs Headteachers, Pastoral, SLT, SENCOs, Mental Health Lead, EDI Lead</b></p>
<p><b>Spring 3 2023</b></p> <p><b>Friday 27<sup>th</sup> January 2023</b></p>	<p><b>National</b></p>	<p><b>National Conference</b> <b>Membership of the NSLN entitles you to one free ticket to this conference which brings together a national and international collection of Church of England educators at all phases with top-class speakers.</b> <a href="#">National Conference 2023: Flourishing Together</a></p>	
<p><b>Spring 3 2023</b></p>	<p><b>Regional</b></p>	<p><b>They share best practices around curriculum thinking between the schools engaged in the BQIC programme.</b></p>	<p><b>Headteachers/SLT</b></p>

		<b>Analyse the current approach to assessment. Current national and regional hot topics around education and their impact, capturing a collective voice to share with the DfE.</b>	
<b>Spring 4 2023</b>  <b>Wednesday 1<sup>st</sup> March 2023</b>	<b>National</b>	<p><b>Growing faith</b> Great ideas for growing faith and encouraging diversity in faith expression through</p> <ul style="list-style-type: none"> <li>• <i>Worship</i></li> <li>• <i>Chaplaincy</i></li> <li>• <i>Integrating faith with behaviour and culture</i></li> <li>• <i>Developing student courageous advocacy</i></li> <li>• <i>Understanding the positive flavour of SIAMs and what they seek to celebrate.</i></li> </ul> <p>Input from: The Growing Faith Foundation</p>	<p>CEOs, Headteachers, SLT Worship and Community leads, SIAMS Leads, RE leads, and Chaplains.</p> <p>Particularly helpful to Heads and members of SLT new to leadership in a church context and established Worship and community leads.</p>
<b>Summer 5 2023</b>	<b>Regional</b>	<p><b>Celebration and Problem-solving- Looking back -Worship and growing faith Looking forward to Distinctive Christian leadership and Equality, Diversity and Inclusion An action learning set-team coaching model to tackle a live problem in the above areas</b></p>	<b>Headteachers/SLT</b>
<b>Summer 6 2023</b>  <b>Wednesday, July 5<sup>th</sup> 2023</b>	<b>National</b>	<p><b>Distinctive leadership in a Christian context</b> What are the similarities/differences between leading schools in church-based and other contexts? How can this be both distinctive and Inclusive? How does this impact Professional development Performance Management Sustainability of staff Equality Diversity Inclusion and Justice Moving from a community school to a church school</p> <p>Input from:</p> <ul style="list-style-type: none"> <li>• Marvin Reese- Mayor of Bristol</li> </ul>	<p>CEOs, Headteachers, SLT, EDI officer, SIAMS- CES inspection officer</p> <p>This would be particularly helpful for schools and MATs to establish how their culture and ethos impact all their processes and staff members.</p>
<b>Year 2 will follow the same structure with three national and regional events.</b>			

We will pick up topics of national importance and include finance, staffing structures (including the use of support staff), staff wellbeing and governance. How do we protect and nurture what is essential to ensure everyone can flourish in challenging contexts?

## What is the cost?:

# Network Delivery Models: NSLN

Secondary School Network	Up to 750 students	750+
Annual subscription	£1 per student (on roll)	£750
2 years' subscription		£1250

### Answering your questions:

#### How do I sign up?

If you are interested in joining the NSLN please contact [lorraine.prince@churchofengland.org](mailto:lorraine.prince@churchofengland.org)

#### Who can attend the session?

2 people to any of the sessions and it is up to the head teacher to decide who is the appropriate person.

#### Where will the national conference be held?

All national conferences will be held in London due to conference capacity, hotel accommodations and access to train connections.



THE CHURCH  
OF ENGLAND  
EDUCATION OFFICE

FOUNDATION FOR  
EDUCATIONAL  
LEADERSHIP